





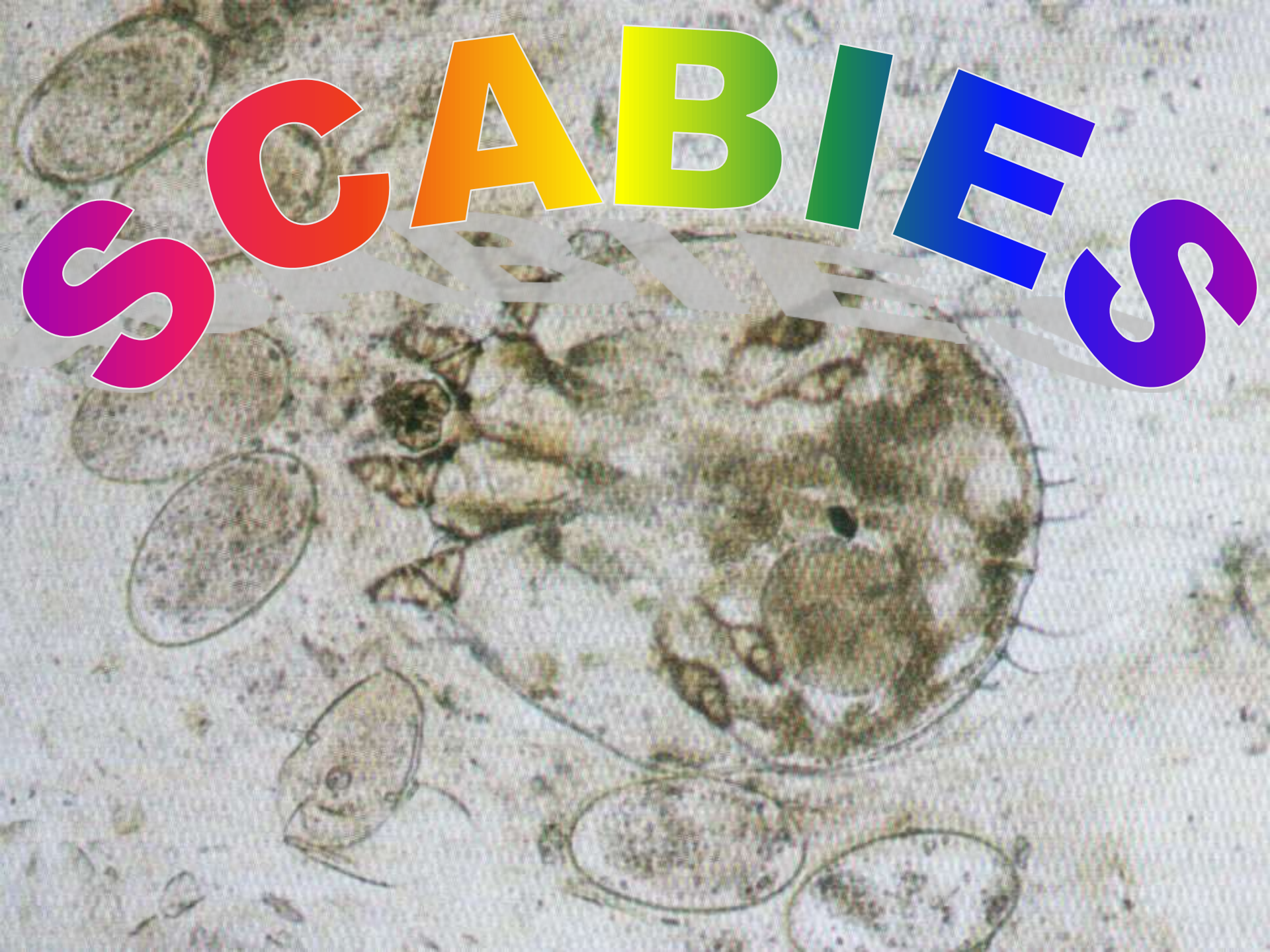
PARASITIC INFESTATIONS

Dr/ Ashraf Ahmed Abd El-Latif, MD.

Lecturer of Dermatology, Venereology and Andrology
Faculty of Medicine- Sohag University

2018

SCABIES



* **Definition:**

A common highly infectious disease caused by fertilized **females** of a mite called *Sarcoptes scabiei*. It is associated with severe itching (Latin: *scabo*, to scratch)

- **Incubation period:** 2 – 3 weeks (Primary)
- Reinfection (???)

■ Etiology:



1



Adult females deposit eggs as they burrow.

10-15 adult ♀

2

40-50 eggs /life cycle



Egg

3

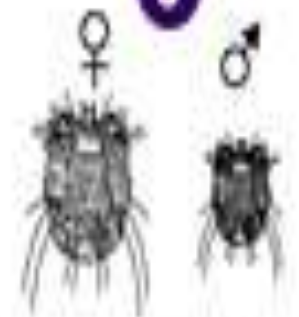
Eggs hatch after 3-4 days

Eggs hatch releasing larvae.

4

Larvae molt into nymphs. Larvae and nymphs are found in short burrows called molting pouches.

5



Mating occurs after the male penetrates the molting pouch of the adult female.

The adult ♀ mite dies after one month, while the ♂ dies immediately after copulation

Impregnated females extend their molting pouches into burrows, laying eggs.

* **Mode of infection:**

- Close contact with the patient
- Indirect, by using clothes or bed of the patient

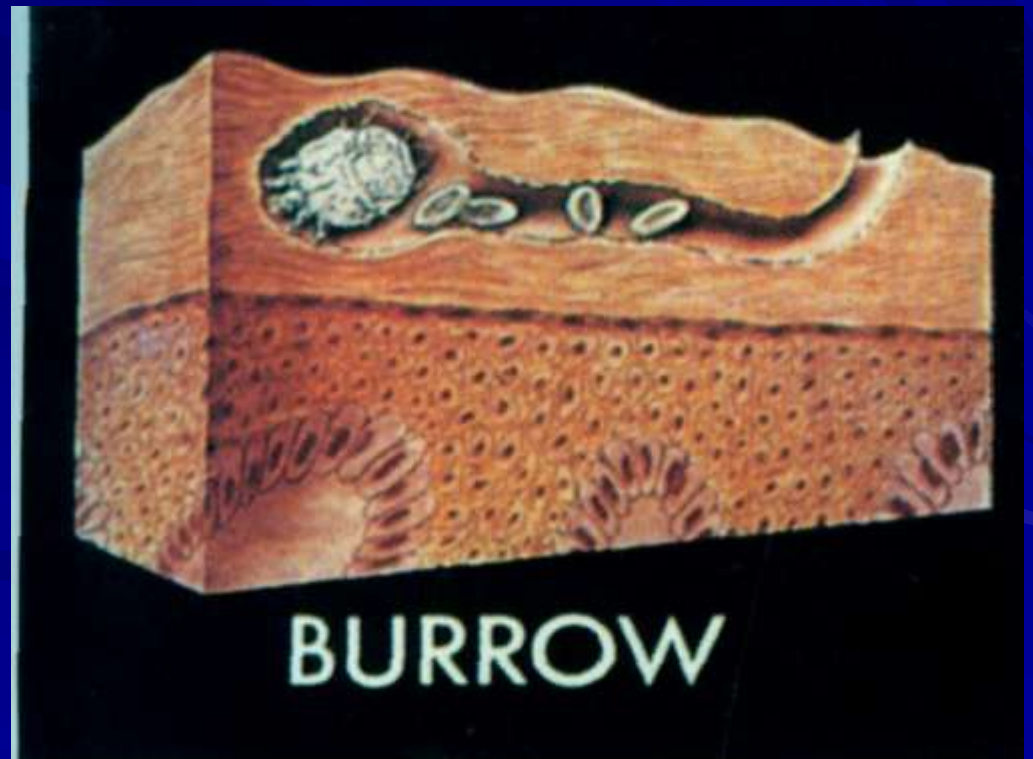
(Mite can not live away from the host more than few days "2-5 days")

- Contact with infected animals



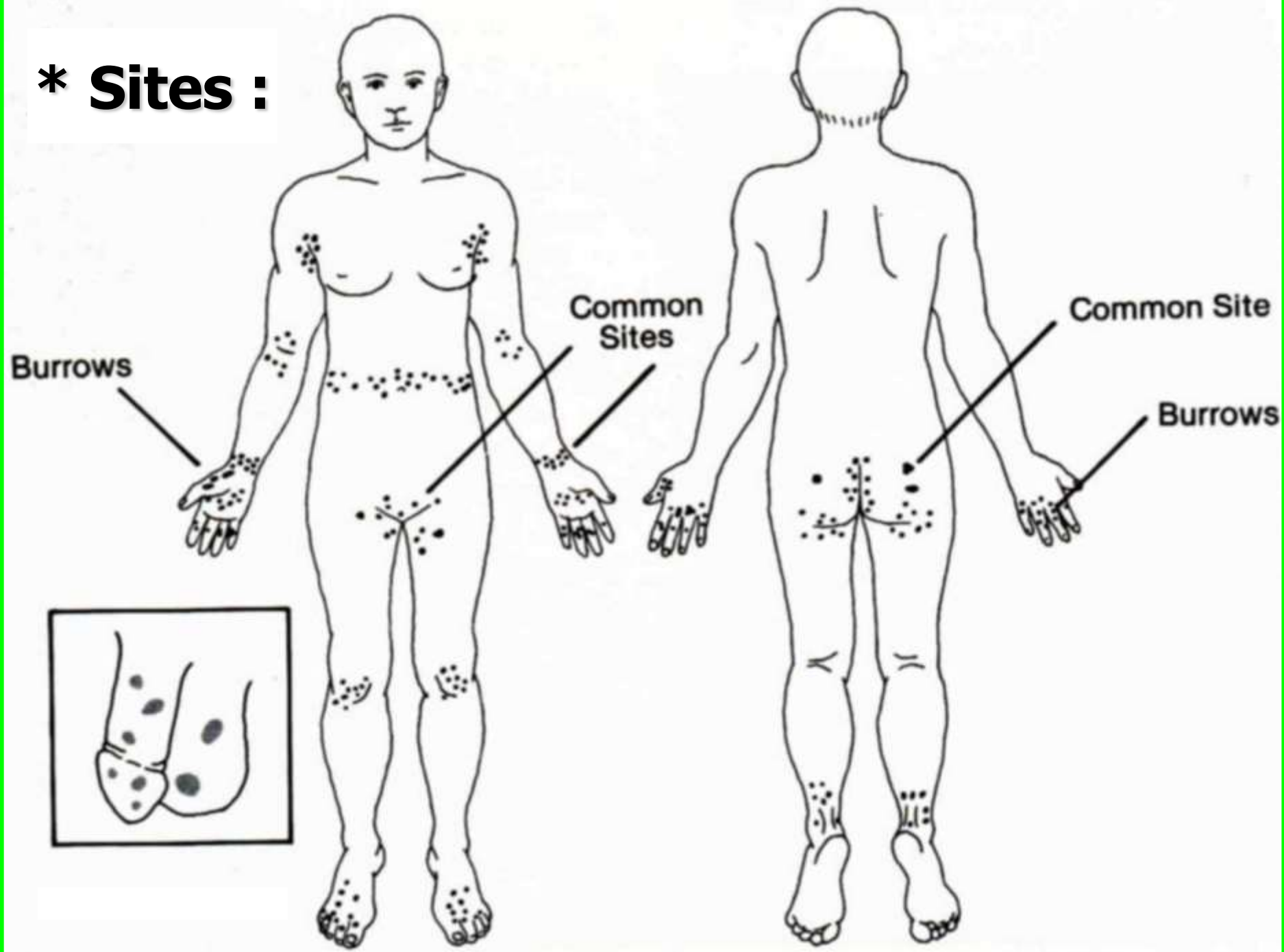
* Clinical picture:

- Severe itching, especially at night
- Skin-colored or grey curved ridges (***burrows***) are characteristic
- Papules, vesicles, pustules & scratch marks





*** Sites :**









(c) University Erlangen,
Department of Dermatology
Phone: (+49) 9131- 85 - 2727



(c) University Erlangen,
Department of Dermatology
Phone: (+49) 9131- 85 - 2727









Fig. 14.









